



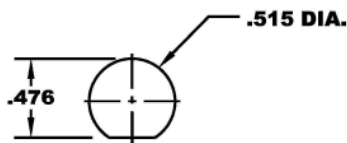
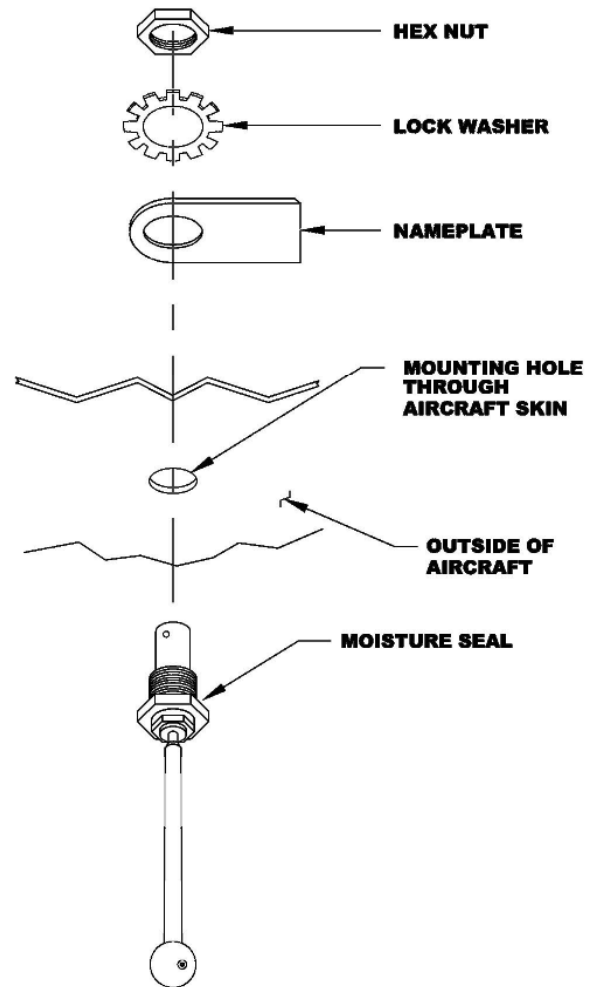
RAMI, Inc.
Grand Haven, MI 49417
(616) 842-9450
www.rami.com

AV-21
Radiophone Antenna for General Aviation

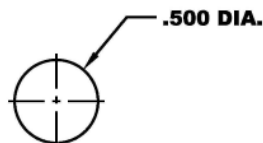
Frequency Range: 764-960 MHz

Installation Instructions

- 1.) Mounting location should be on the belly of the aircraft, at least 18" from any other metal protrusions. Mount on as flat a surface as possible.
- 2.) Drill mounting hole (see options below) through the aircraft skin at desired location. Remove all burrs from around edge to allow proper seating of moisture seal.
- 3.) Disassemble antenna by removing the hex nut, lock washer, and nameplate as shown in the illustration to the right.
- 4.) Insert the antenna through the mounting hole from the outside of the aircraft.
- 5.) Slide nameplate and lock washer over the BNC connector of the antenna from the inside of the aircraft. Thread the hex nut onto the BNC connector and tighten securely.
- 6.) Connect the antenna to the aircraft radio using a cable with a BNC type connector attached (not supplied).



**MOUNTING HOLE
OPTION #1**



**MOUNTING HOLE
OPTION #2**