



RAMI, Inc.  
Grand Haven, MI 49417  
(616) 842-9450  
www.rami.com

AV-3  
Low Profile Snap-In Mount VHF Antenna

Frequency range: 108-512 MHz

Installation Instructions

- 1.) **Mounting location:** The antenna may be mounted to any flat surface such as the rooftop, cowl, fender or rear deck. The rooftop is recommended for the best antenna performance.
- 2.) The use of PTFE or a similar lubricant on the threaded portions of the antenna, prior to assembly, will protect from the weather and ease future disassembly.
- 3.) Drill a .375 (3/8) diameter hole through the desired mounting surface.
- 4.) Route the cable through the mounting hole exposing leaving approximately 6" of cable exposed. See figure 1. Loosely coil excess cable at the radio end, and store where it will not be damaged.
- 5.) Carefully strip cable end as shown. See figure 1.
- 6.) Remove braid nut and sleeve from clamp assembly. See figure 2.
- 7.) Slide clamp over stripped end of cable and press clamp fingers into mounting hole. See figure 2.
- 8.) Hold 1/2" flats on the clamp and tighten the threaded nut using the 3/4" flats until securely fastened to the mounting surface. See figure 3.
- 9.) Slide sleeve onto cable and (small end first) and push into clamp until the flared end of the sleeve is flush with the top of the clamp. See figure 3.
- 10.) Fan out braid wire on cable and slide cable through the clamp until the braid wires are able to lay flat on the sleeve flange and top of clamp.
- 11.) Slide the braid nut over the exposed center conductor and tighten onto the clamp to securely capture the braid wires. See figure 3.
- 12.) Place the gasket over the clamp assembly and lay flat on the mounting surface. See figure 4.
- 13.) Thread the insulator onto the clamp assembly feeding the conductor through the center hole. See figure 4.
- 14.) Wrap the center conductor, clockwise, around the top shoulder of the threaded portion of the insulator. Trim center conductor if necessary. See figure 4.
- 15.) Slide the whip into the adapter and secure by tightening the set screws with the allen wrench provided. See figure 5.
- 16.) Thread the whip assembly onto the insulator making sure the center conductor is held securely.
- 17.) If tuning the antenna is required, cut the whip according to the cutting chart provided.

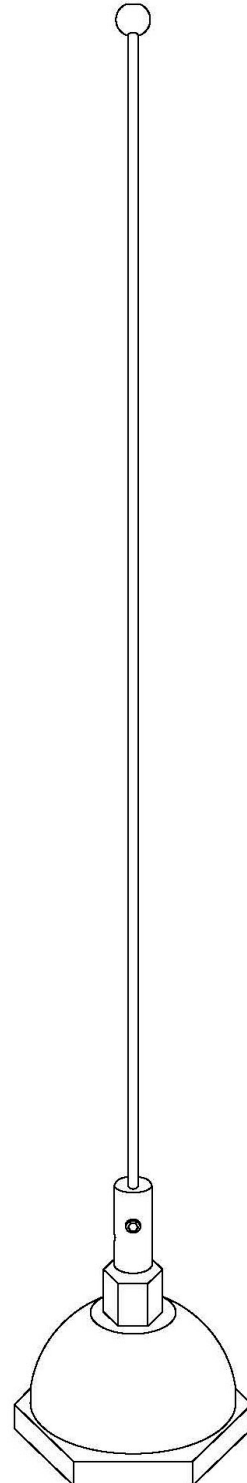


FIG. 1

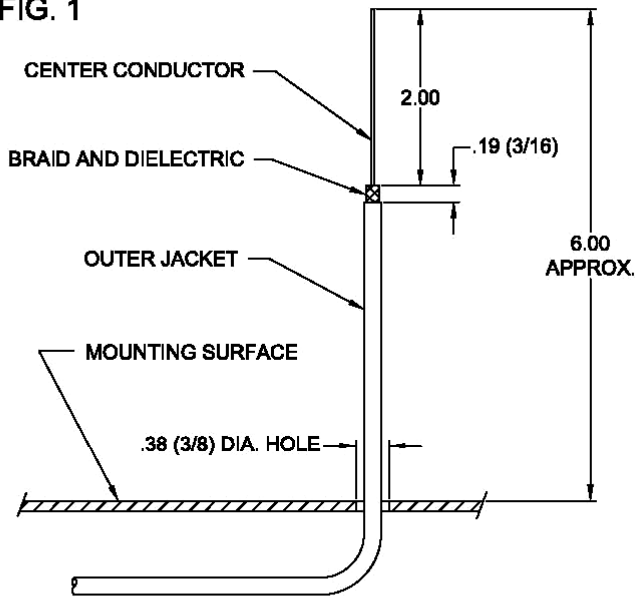


FIG. 2

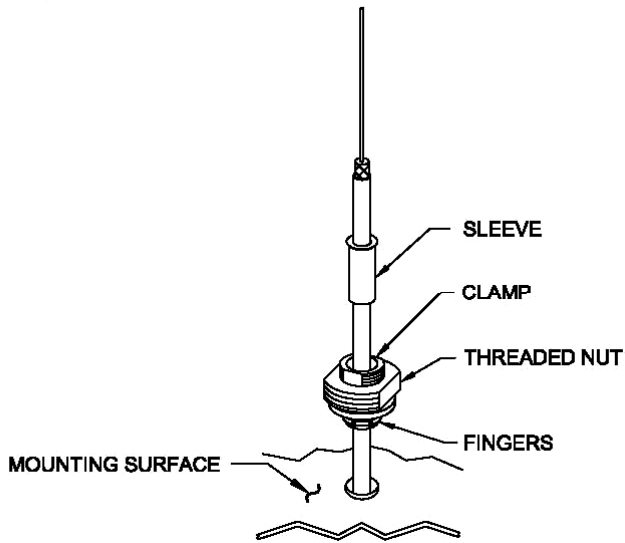


FIG. 3

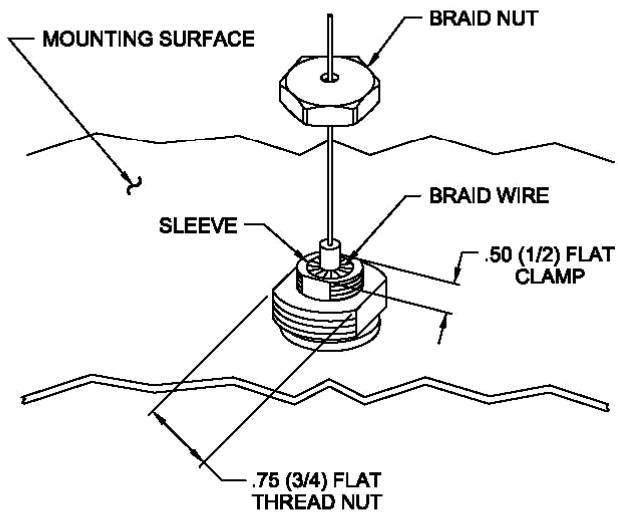


FIG. 4

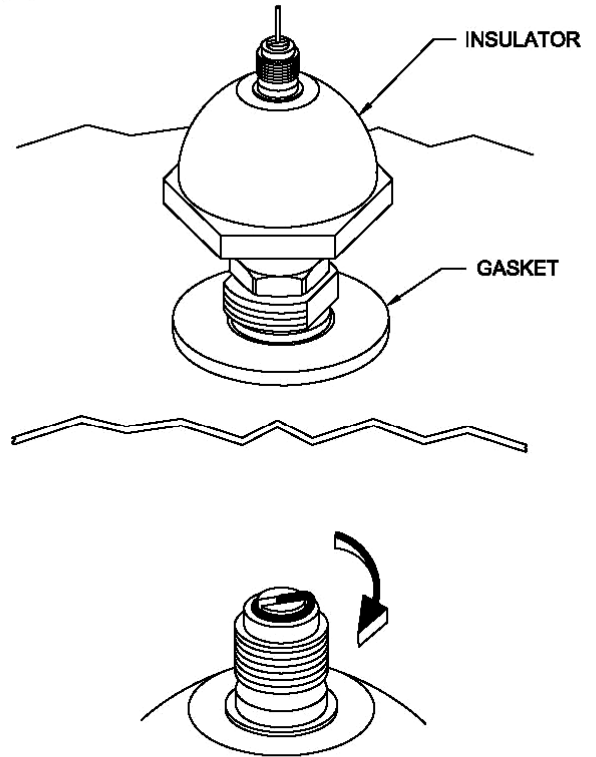


FIG. 5

